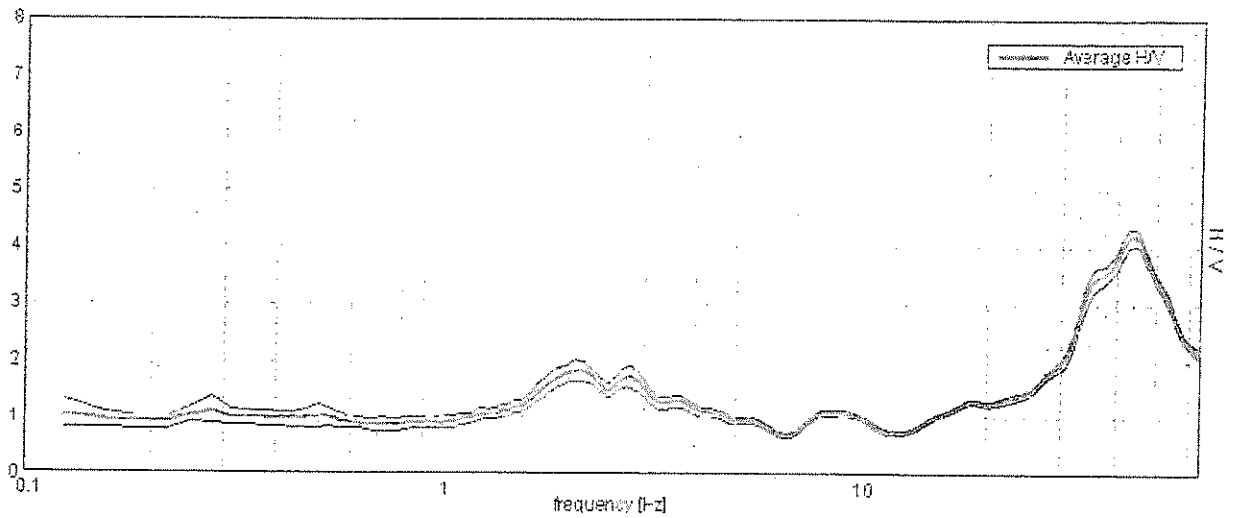


ELABORAZIONE MISURE SISMICHE PASSIVE

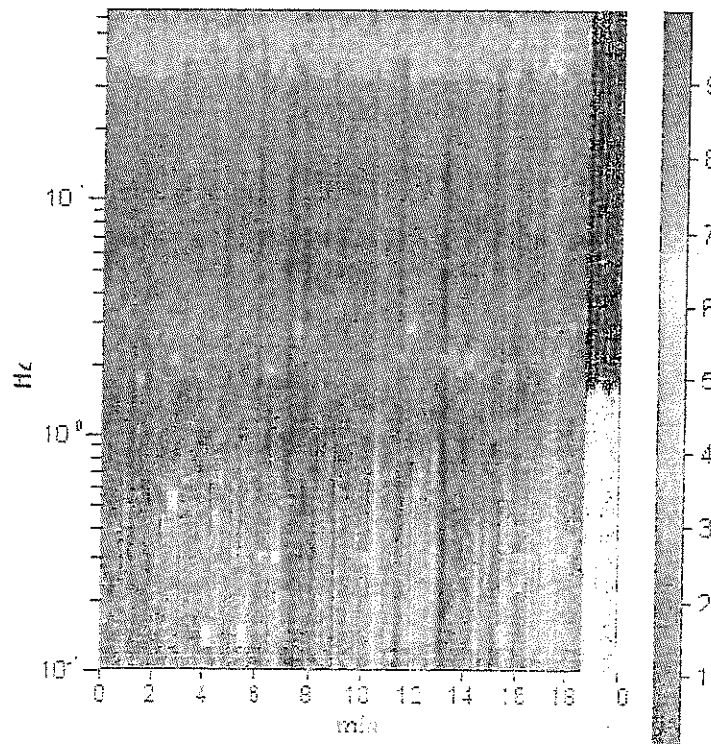
Channel labels: NORTH SOUTH; EAST WEST; UP DOWN
Trace length: 0h20'00". Analyzed 80% trace (manual window selection)
Sampling frequency: 128 Hz
Window size: 20 s
Smoothing window: Triangular window
Smoothing: 10%

HORIZONTAL TO VERTICAL SPECTRAL RATIO

Max. H/V at 44.09 ± 0.08 Hz. (in the range 0.0 - 64.0 Hz).

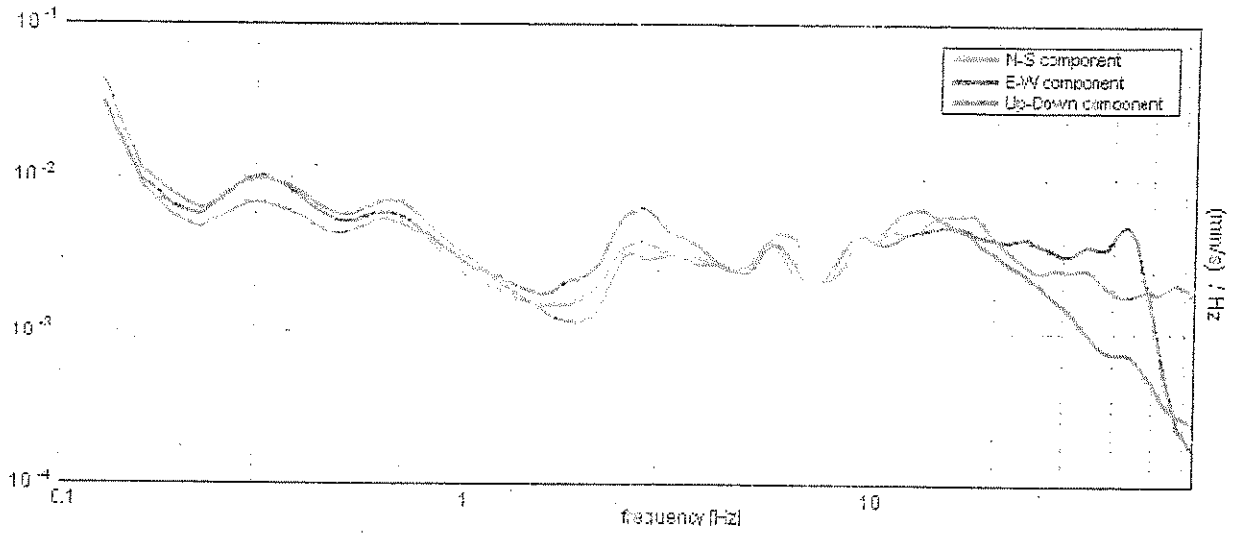


H/V TIME HISTORY



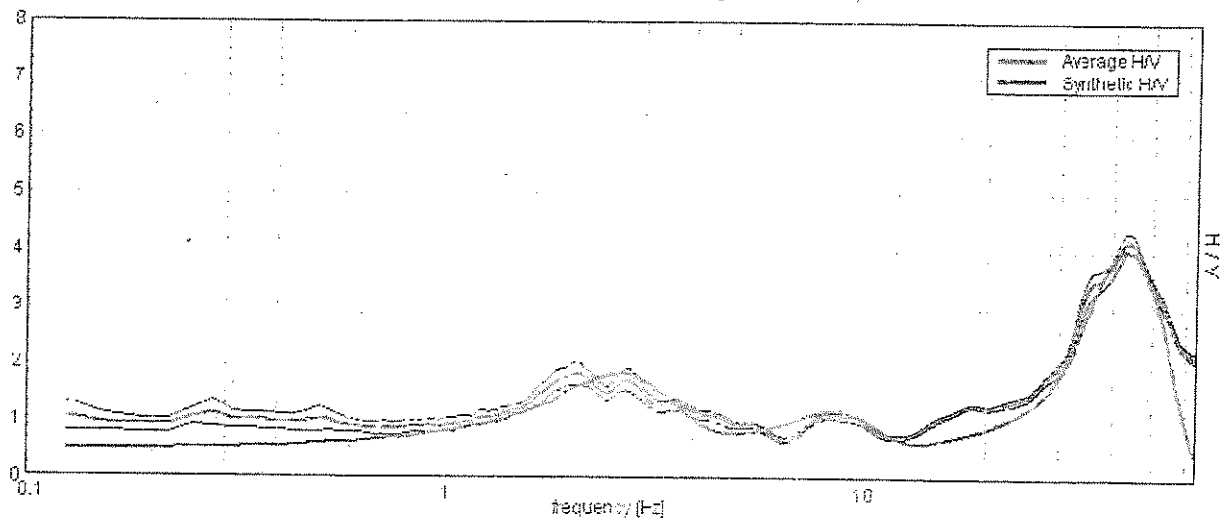
ALLEGATO 1

SINGLE COMPONENT SPECTRA



EXPERIMENTAL VS. SYNTHETIC HV

Max. HV at 44.06 ± 0.03 Hz. (In the range 0.0 - 64.0 Hz).



ALLEGATO 1

Depth at the bottom of the layer [m]	Thickness [m]	Vs [m/s]
0.28	0.23	46
3.80	3.52	120
8.80	5.00	220
11.80	3.00	150
16.80	5.00	250
26.80	10.00	320
36.80	10.00	350
inf.	inf.	380

$V_s(0.0-30.0)=217\text{m/s}$

