



ELABORATI

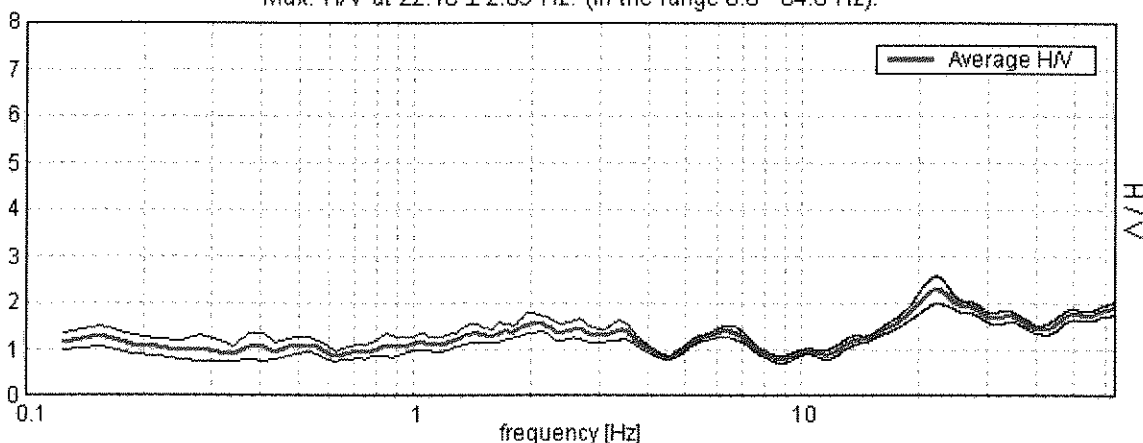
PORTO D'ASCOLI, VIA DEI LAUREATI 01

Start recording: 04/10/11 08:28:24 End recording: 04/10/11 08:40:25
Channel labels: NORTH SOUTH; EAST WEST; UP DOWN
GPS data not available

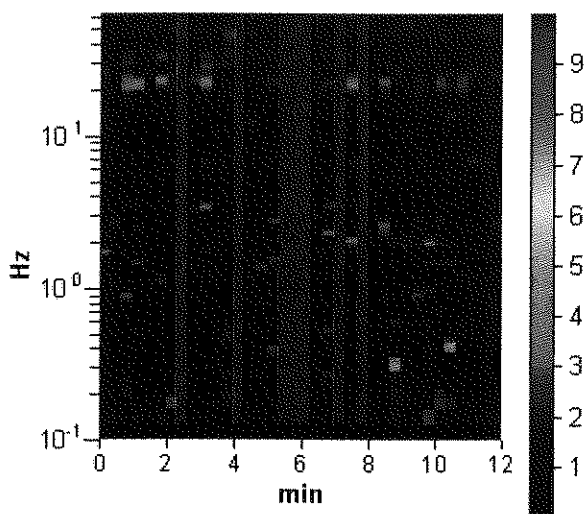
Trace length: 0h12'00" Analyzed 81% trace (manual window selection)
Sampling frequency: 128 Hz
Window size: 20 s
Smoothing window: Triangular window
Smoothing: 10%

HORIZONTAL TO VERTICAL SPECTRAL RATIO

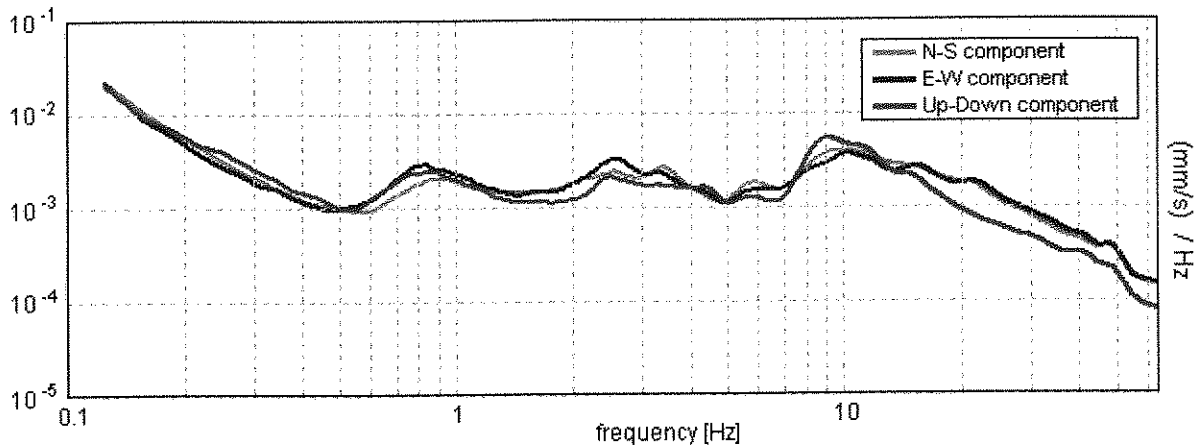
Max. H/V at 22.16 ± 2.09 Hz. (In the range 0.0 - 64.0 Hz).



H/V TIME HISTORY

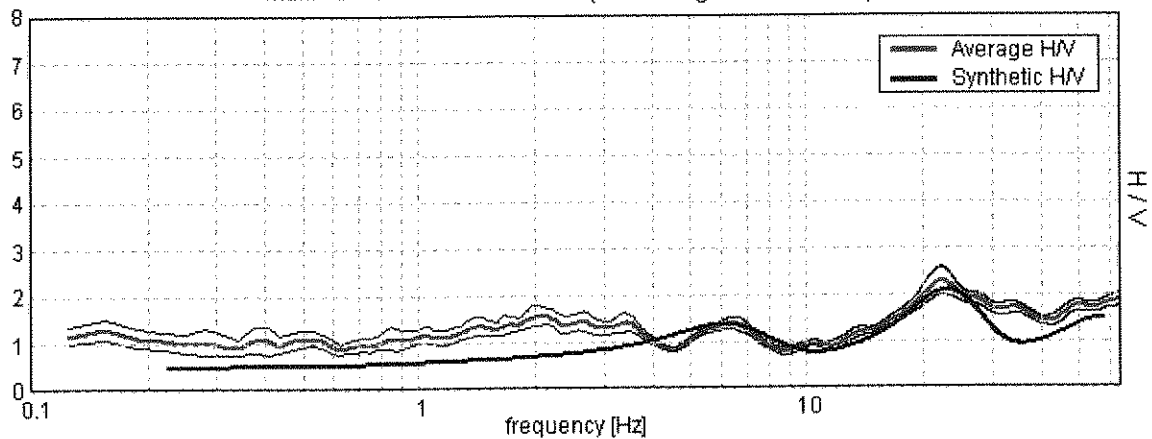


SINGLE COMPONENT SPECTRA



EXPERIMENTAL VS. SYNTHETIC H/V

Max. H/V at 22.16 ± 2.09 Hz. (In the range 0.0 - 64.0 Hz).



Depth at the bottom of the layer [m]	Thickness [m]	Vs [m/s]	Poisson ratio
0.40	0.40	90	0.35
2.20	1.80	180	0.35
4.80	2.60	330	0.35
10.20	5.40	270	0.35
20.20	10.00	430	0.35
inf.	inf.	450	0.35

Vs(0.0-30.0)=343m/s

